

The background of the entire page is a photograph of a lush meadow filled with various wildflowers in shades of purple, red, yellow, and blue. In the middle ground, there is a long, dark green fence. Behind the fence, a line of green trees is visible against a clear blue sky. A large, white, curved graphic element is positioned in the top-left corner of the page. The Exagen logo is centered in the lower-left area of the image.

**exagen**  
energising a cleaner future

# Normanton Energy Reserve, Leicestershire

Public consultation - Project information leaflet

Exagen SPV02 Limited  
August 2022

## > Introduction

**Exagen SPV02 Ltd, part of Exagen Development Ltd is seeking to develop a utility scale grid management facility using battery energy storage technology.**

The project is located on land east of the A47 to the northeast of Earl Shilton.

We are seeking your views on this proposal ahead of submitting a formal planning application to Blaby District Council later this year.

This leaflet provides some information about the project and the consultation that is being undertaken. To reduce paper wastage we also have a survey form on our website to allow us to collect comments and opinions from interested parties. If you require assistance to complete the survey, or require a paper copy of the survey please contact us and we can send this to you along with a stamped and addressed return envelope.

**[www.exagen.co.uk/normanton-energy-reserve](http://www.exagen.co.uk/normanton-energy-reserve)**

PLEASE NOTE THAT TAKING PART IN THIS CONSULTATION PROCESS DOES NOT AFFECT YOUR STATUTORY RIGHTS TO MAKE REPRESENTATIONS TO BLABY DISTRICT COUNCIL WHEN THE FORMAL PLANNING APPLICATION IS SUBMITTED.

This website has been created to keep members of the local community updated and to facilitate feedback. We will also hold an online webinar and a public exhibition event, offering an opportunity to review the draft development proposals and discuss the scheme and any questions or suggestions you may have with members of the project team.

### Dates for your diary

#### Webinar

17th August 2022, 6pm-8pm  
Webinar ID: 362-565-435

The link to the webinar can be found on our project website or follow the qr code below.



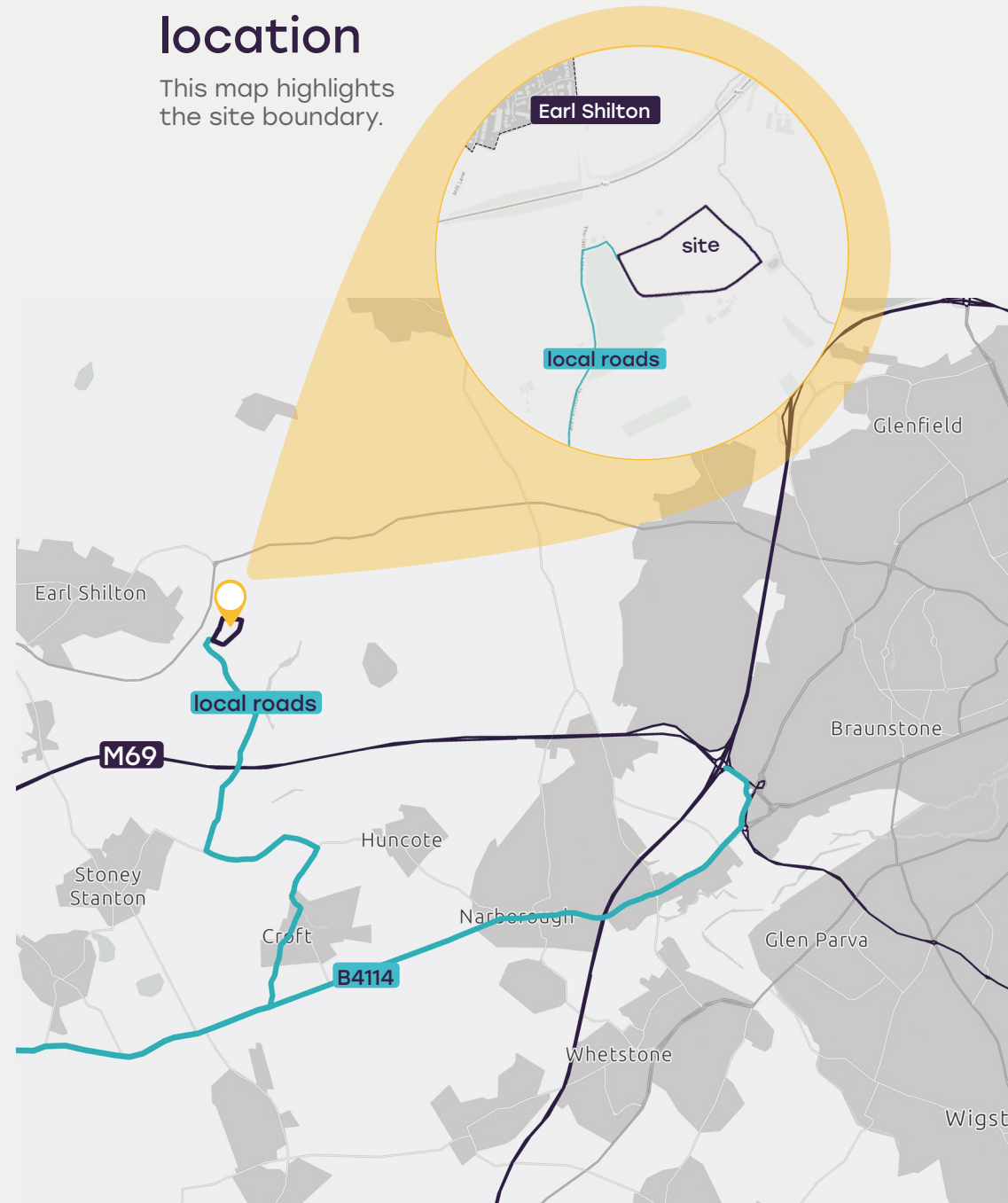
#### Public exhibition

18th August, 2022, 4pm-8pm  
Earl Shilton Centre (main hall)  
Kings Walk, Earl Shilton,  
Leicestershire, LE9 7NL

In addition to making written comments at the public event, further representations can be made by email or by post via the project contact details at the back of the leaflet.

## > Site location

This map highlights the site boundary.



## > Project overview

Exagen is proposing to build a utility scale battery energy storage site to the north east of Earl Shilton. Sites like this allow more UK based renewable electricity generation to be built which increases our energy security, removes carbon from the grid and decreases our reliance on gas and electricity from overseas.



Total land area  
**19 acres, approximately**  
50% of infrastructure  
50% of landscaping and  
biodiversity improvement



Construction **9 months**



Energisation **late 2027**



Employment  
**65 during construction**  
**12 full time during**  
**operations**



Business rates  
**£770,000 per annum**  
**estimated**

## > Why do we need battery storage?

- > Batteries help manage peaks in demand – being able to import and export to the grid at short notice and reduces the need for gas generation
- > Allows more low cost wind and solar to connect to the grid whilst still being manageable for the power companies
- > Reduces our reliance on imports from overseas, of electricity, oil and gas increasing our energy independence and improving our energy security
- > Helps with the transition to a low carbon grid with an improved environment
- > Looks to address the Climate Emergency and our Net Zero by 2050 commitments

## > Why this site?

The site has been selected for a number of reasons:

- > Available grid capacity and infrastructure on site.
- > Land will be owned by Exagen Group allowing us to deliver permanent improvements in woodland creation and new habitats and biodiversity
- > Site is free of any significant environmental designations and not green belt
- > Good access
- > A contained site that will be designed and screened to be unobtrusive and provide local benefit
- > Huge potential for biodiversity enhancement, local amenity improvement and even food production consequent to public engagement

Access to the site will be directly off Earl Shilton Road. Route to site is via either the M1 or M69. If coming from the M1 the route would be Narborough Rd South/ B4114/ Coventry Rd/ Broughton Rd/ Huncote Road/ Thurlaston Lane.

If coming from the M69 the route to Coventry Road would be via the B4669. The routes generally avoid minor roads through settlements.

Construction of the development would take approximately 9 months and will employ approximately 65 people. Once operational the site would employ approximately 12 full time staff and contribute business rates of approximately £770,000 per year.



275kV Energy park with a **peak capacity of 500MW** and a duration of **2 hours**.

This would cycle the equivalent of **235,000 UK homes** annual usage per year.



x235k

## > Development components

The development will occupy part of the field through which high voltage overhead electricity transmission lines pass through and into which the development will connect.

It will include the following infrastructure:

- > Battery storage containers arranged in rows – these would have an appearance of standard shipping containers and have a height of approximately 3m.
- > Inverters, low voltage transformers and high voltage switchgear
- > 3 grid transformers
- > Internal access tracks
- > National grid substation
- > Perimeter security fencing
- > Temporary laydown/construction compound
- > New access junction off Earl Shilton Rd



The project will maximise opportunities for biodiversity enhancement delivering a net gain of more than 20%

The project will include landscaping and biodiversity enhancement – this will include an area of **woodland planting to the eastern boundary, as an extension of the Normanton Millennium Wood**, an area of wildflower grassland to the southwest and smaller measures such as **log piles for reptiles and amphibians, bird and bat boxes.**

## > Local engagement

Exagen is committed to the local communities in which we operate. We engage with communities on each project through a public consultation and try to identify **positive amenities that the project can deliver and local initiatives that we can support through a community benefit fund.**

Local contractors and businesses will be engaged as far as possible during the construction and operational phases, where service offerings are not specialist and we'll encourage and assist the local supply chain and education centres to train and develop people in parallel with our projects.

**If you would like to obtain further information about a community benefit fund or enquire about providing services for this project, please visit the project website.**

## > Pre-planning process

A number of surveys are being conducted to establish any potential effects of the development on the site and surrounding lands. **These surveys include noise, ecology, archaeology & cultural heritage, construction access & traffic and flood risk.** In addition, a **landscape and visual impact assessment** will be undertaken to identify any impacts on nearby viewpoints. These viewpoints and the proposed site layout can be viewed on the project website.

We will use the findings of these surveys, alongside the comments received through the public consultation process to refine the final design of the Development in advance of the planning application being submitted. We are keen to get your comments on our proposals so they can shape the final design, however, **members of the public will also be provided with an opportunity to formally comment on the proposals direct to the local planning authority when the planning application is submitted.**

overview

# Conceptual design

Boundary providing connectivity between two existing ponds.

1 We will maintain and enhance the existing boundary vegetation which includes hedgerows and mature trees

2 Wildflower meadow and/or polytunnels for community food production beneath overhead electricity lines and above buried gas pipe

3 New hedgerow with trees to be planted

4 Bird and bat boxes placed on suitable mature trees

5 Earth bund formed and planted with wildflower grass mix.

6 Substantial belt of woodland planting along the eastern boundary of the site.

7 Newly constructed access junction



## > About Exagen

Exagen is a renewable energy developer, asset owner and asset manager, building the next generation of utility scale solar farms and grid-balancing battery storage facilities.

We are involved in projects all the way through from origination and planning to construction and operation.

The **Exagen Development Team** comprises 9 staff with more than 75 years combined experience in development of renewable energy projects in the UK.

## > Get in touch

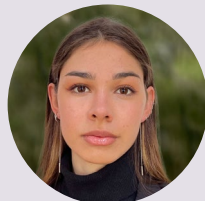
The team for the Normanton Energy Reserve project includes:



**Mark Rowcroft**  
Development Director



**Edward Shuttleworth**  
Development Manager



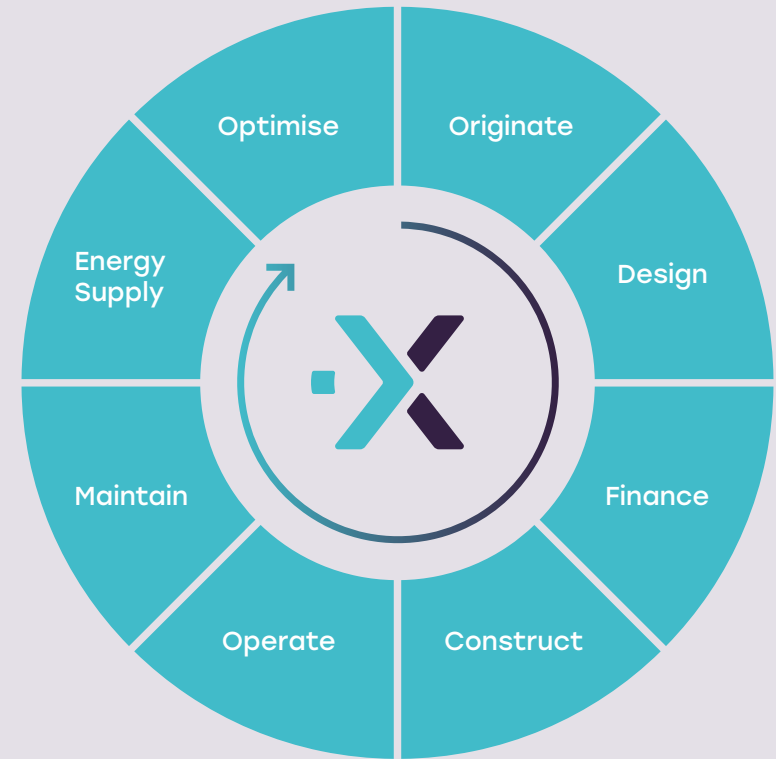
**Flavia Bernabò**  
Project Coordinator



**Andrew Mott**  
Planning Manager

---

[www.exagen.co.uk/  
normanton-energy-reserve](http://www.exagen.co.uk/normanton-energy-reserve)  
e: [normantonenergyreserve@  
exagen.co.uk](mailto:normantonenergyreserve@exagen.co.uk)  
t: 03300 100 545



> We are involved in projects all the way through from origination and planning to construction and operation.

**exagen**

energising a cleaner future

15<sup>th</sup> Floor, Millbank Tower, 21-24 Millbank, London SW1P 4QP

[www.exagen.co.uk/normanton-energy-reserve](http://www.exagen.co.uk/normanton-energy-reserve)

e: [normantonenergyreserve@exagen.co.uk](mailto:normantonenergyreserve@exagen.co.uk)

t: 03300 100 545